



USE AND MAINTENANCE MANUAL

REV0 7/30/2023 PBCA0106GB

ISOTHERMAL CONTAINERS **CARGO**

INDEX

1. INTRODUCTION

- 1.1 Field of application
- 1.2 Consultation of the manual
- 1.3 Warranty

2. WARNINGS

- 2.1 General recommendations

3. USE OF THE PRODUCT

- 3.1 First use
- 3.2 Instructions for using the opening handle with release button
- 3.3 Instructions for using the opening lever handle
- 3.4 Instructions for preparing the container before loading
- 3.5 Loading instruction
- 3.6 Instructions for carriage

4. MAINTENANCE

- 4.1 Washing instructions
- 4.2 Maintenance instructions
- 4.3 Routine maintenance
- 4.4 Extraordinary maintenance
 - 4.4.1 Replacement of the gasket
 - 4.4.2 Replacement of wheels
 - 4.4.3 Replacement of the closing handle with release button
 - 4.4.4 Replacement of the closing lever handle
 - 4.4.5 Replacement of the handle stop
 - 4.4.6 Replacing the thermometer
- 4.5 Welding instructions

5. DISPOSAL

- 5.1 Packaging
- 5.2 Product

6. CERTIFICATIONS

1. INTRODUCTION

1.1 Field of application

The Cargo isothermal container has been specially designed and manufactured to ensure the safe and temperature-controlled transport of perishable products, keeping the cold chain intact. It is particularly suitable for a wide range of transport operations, ranging from the field harvesting phase, to the food processing industry, to distribution to logistics platforms and the transfer of products inside the refrigerated counters of supermarkets.

Thanks to its advanced features, the Cargo container responds optimally to the needs of storage and transport of perishable products, ensuring the preservation of the freshness and quality of food goods throughout the distribution process.

1.2 Consultation of the manual

This manual has been structured to provide the user with all the essential information regarding the use and maintenance of the product, quickly and easily. It is recommended to keep the manual always available to the personnel responsible for maintenance operations and operators involved in the use of the product.

It is important to read the instructions for use carefully before putting the product into service, in order to ensure correct use and achieve optimal performance.

1.3 Warranty

This product is covered by a warranty against manufacturing defects for a period of 2 years from the date of purchase, provided that:

- has been used in accordance with the particulars supplied by the manufacturer,
- has not been damaged due to improper use.

Accidental damage resulting from transport, negligence, misuse or failure to follow the instructions in this manual is excluded from warranty coverage. The warranty will become void in the event that the product has been repaired or tampered with by unauthorized persons.

We invite you to contact your local distributor or MELFORM customer service customercare@melform.com for any assistance and for the possible supply of original spare parts.

Please note that CARGO is an exclusive product of MELFORM. The manufacturer reserves the right to make changes to the characteristics of the models at any time without prior notice. In addition, it is possible that there are variations in the shades of the colors of the product.

2. WARNINGS

The container has been designed and manufactured in accordance with the latest state of technology, meeting all the necessary requirements to ensure safe and correct operation.

2.1 General recommendations:

- The use of the CARGO container must be in full accordance with the manufacturer's instructions. It is important to emphasize that the main function of the container is to maintain the temperature of the products during transport, therefore use in ways other than intended is contraindicated.

- The product is guaranteed to be used in a temperature range between -30°C and +85°C.
- Please note that the CARGO container is intended for use by adults and trained persons and must be kept out of reach of children.
- During transport, it is advisable to handle the container with care and to carefully respect the instructions given in this manual regarding the opening and closing of doors. Personal protective equipment, such as work gloves, should be used during such operations in order to avoid the risk of pinching.
- It is recommended to periodically check the general condition of the container. In the event of breakage, damage or cracking, it is essential to suspend the use of the container to avoid impairment of isothermal performance and the potential risk of contamination of the transported product. Also make sure that the door is closed properly.
- Attention: the container door cannot be opened from the inside, so it is essential to avoid closing people or animals inside the container.
- It is not allowed to put the container in contact with sharp, sharp surfaces or expose it to sources of direct heat, such as open flames.

IMPORTANT:

The manufacturer wishes to emphasize that it declines all responsibility in the event that the user company does not comply with the accident prevention regulations in force. Please carefully take all required safety measures when using the product to ensure a safe working environment for the personnel involved. Compliance with accident prevention regulations is essential to prevent accidents and protect the health and well-being of all operators.

3. USE OF THE PRODUCT

3.1 First use

The container underwent a cleaning process before being shipped from the factory. However, before using the container for the first time, it is still recommended to wash in accordance with the procedures described in section 4.1 "Washing instructions". This precaution will ensure maximum hygiene and ensure that the container is ready for use safely and in accordance with the specific needs of the user.

3.2 Instructions for using the opening handle with release button

With your left hand, grasp the handle on the left wall of the container.



With your right hand, hold the handle by grasping it at the black lever, pushing it slightly forward.



With the thumb of your right hand, push the handle release button forward.



Release the unlock button and open the handle by pulling it towards you.



Return the handle to the closed position, pushing it forward.



3.3 Instructions for using the opening lever handle

Move the movable handle plate upwards, then turn it anticlockwise until it stops.



Grip the handle with your right hand and turn the handle counterclockwise until it is free from the seat on the handle retainer.



Turn the handle towards you 90 ° so as to free the upper and lower hooks.



Pull the handle to open the door.

To close the container:

Place the left hand on the grip on the left side of the Cargo and, with the right hand on the handle, push the door as far as possible against the body. Repeat the sequence described for the opening in reverse order.



3.4 Instructions for preparing the container before loading

Normally it is not necessary to precondition the container; If you want to do so, leave the container open inside a cold room. This is recommended if the container has been exposed to high ambient temperatures or the heat of the sun.

3.5 Loading instructions

- Open the container carefully following the instructions regarding the use of the handle (see sections 3.2/3.3).
- During loading and unloading, it is recommended to activate the wheel brakes, if available.
- It is important to emphasize that the function of the CARGO container is not to cool the products, but to maintain the desired temperature. Therefore, it is essential to load the goods inside the container at the desired temperature before transport.
- It is recommended to load the container at least to 50% of its capacity, even if optimal temperature preservation is achieved at full load.
- During loading, food disperses thermal energy, so it is advisable to carry out the operation in the shortest possible time and immediately close the door.

- To prolong the time of maintaining temperatures in cool or frozen mode and increase safety margins, it is suggested to use eutectic plates.
- The maximum recommended load for the container with wheels is 400 kg for Cargo 370 and 500 kg for Cargo 780, 1000EU, 1300 and 1300TW.
- It is possible to separate the load inside the container using intermediate grids. We recommend the use of one grid for Cargo 500, three grids for Cargo 370, 780, 1300TW and four grids for Cargo 1000EU. For Cargo 1300 there are no intermediate grids.
- For the transport of fish, several solutions are available in the catalog to prevent the leakage of ice meltwater contained in the fish transport boxes. In addition, an expansion plug is available to allow the evacuation of residual water.
- To close the container, grab the handle located on the left wall of the container and, with your right hand, act on the closing handle.

3.6 Instructions for carriage

- Before handling the container, make sure that the door is closed.
- Move the container equipped with wheels by acting on the appropriate handles. During molding, a support plate is embedded in polyethylene, which makes the wheel attachment resistant to movements on uneven surfaces.
- Move the container on wheels using the appropriate handles.
- Move the container equipped with pallets using appropriate lifting systems (pallet trucks, forklifts). Handling must be carried out by trained operators who are informed of the risks involved.
- When handling the container, pay the utmost attention to avoid collisions with things or people.
- Do not use the container on inclined planes with manual handling. Always use suitable lifting systems for this purpose.
- In the event that multiple deliveries are made using the same container, avoid prolonged openings, as each time a large dispersion of thermal energy is caused.

4. MAINTENANCE

4.1 Washing instructions

Clean the container regularly inside and outside, following these guidelines:

- The water temperature must not exceed +85°C.
- Do not use metal or synthetic scourers, use only soft brushes with plastic or natural bristles.
- Do not use abrasive powders, ammonia, acids or solvents.
- Use soapy solutions or chemical detergents, as long as they do not contain acetone, turpentine, solvent gasoline, acetic acid esters, ethanol, isopropanol and alcohol of higher molecular weight.
- All parts of the container that have been washed should always be rinsed thoroughly. It is possible to use high pressure water jets.

- For hygiene, after washing, always dry the container with warm air or disposable paper (never reusable cloths).

4.2 Maintenance instructions

MELFORM places great emphasis on the importance of regular maintenance of the container in order to prevent breakage, extend its service life and ensure its proper functioning.

In this regard, the following is recommended:

- Carry out the maintenance of the container at least once a year, using only qualified technicians.
- Always use original spare parts for any maintenance intervention.

For any assistance and for the purchase of original spare parts, please contact your local distributor or our Customer Service Department via the email address customer care@melform.com. We are at your complete disposal to ensure timely and professional support.

Below are instructions on disassembling and reassembling any replaceable components.

4.3 Routine maintenance

PRODUCT	PERIODICITY	TYPE OF CONTROL
Wheels	3 months	Lift the container and check the correct rotation, swiveling, cleaning, absence of breakage and tread wear.
Door	6 months	The opening and closing operations of the door must be smooth, frictionless. Lubricate moving parts with silicone or Teflon sprays to reduce friction and extend the life of mechanical parts. - Check the correct functioning of the closing handle. - Check the state of conservation of the gasket on the entire perimeter of the door. - Check the conservation status of the door retainer tab. - Check the conservation status of the card holder, if any.
Door retainer	6 months	Check the correct attachment of the door to the body in the open position. - Ascertain the absence of any deformations or breakages.

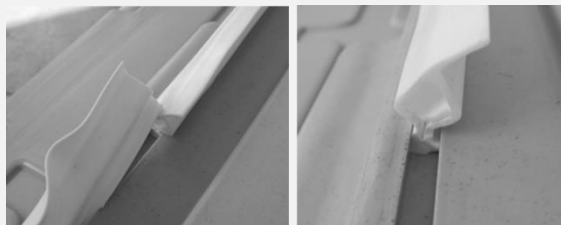
PRODUCT	PERIODICITY	TYPE OF CONTROL
Bolts, screws, plugs, rivets	6 months	Check the presence of all the screws supplied.
Body and door: aesthetic check	6 months	- Check the absence of breakages on the body and door. Any breakage must be restored as soon as possible by welding, to avoid degradation of the internal insulation (section 4.5 "Welding instructions").
Moving parts	6 months	- Lubrication of all moving parts, to avoid friction.
Thermometer (if any)	3 months	- Check the correct functioning.

4.4 Extraordinary maintenance

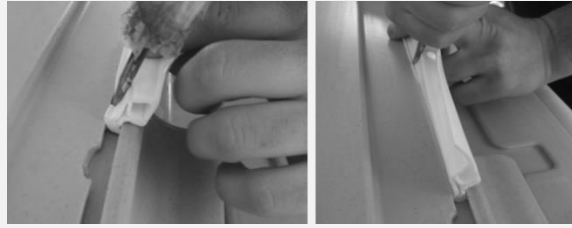
4.4.1 Replacement of the gasket

Replace the gasket as follows:

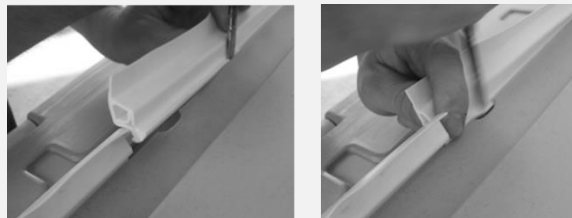
- 1 - Extract the gasket (A) from its seat (inverted T-groove), pulling it outwards with finger pressure. Start to extract the gasket starting from the junction zone in the part lower left of the door.



- 2 - Insert the new gasket using a flat tool (e.g. cutting screwdriver), not cutting edge. Lubricate along the gasket to facilitate insertion and start inserting the gasket starting from the junction area at the bottom left of the door



3 - Cut the gasket to the correct length, so that the two flaps fit together

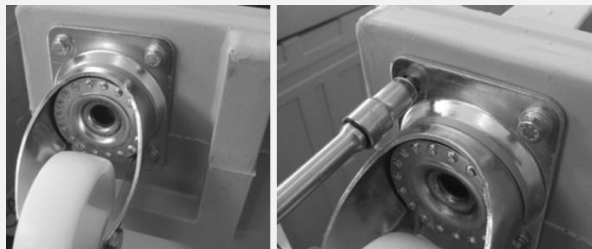


4.4.2 Replacement of wheels

Replace the wheels by following these steps:

1 - Place the container on the back

2 - Unscrew the M8 screws with the relative washers



3 - Remove the wheel concerned and replace with the new wheel



4 - Screw the M8 screws with the relative washers

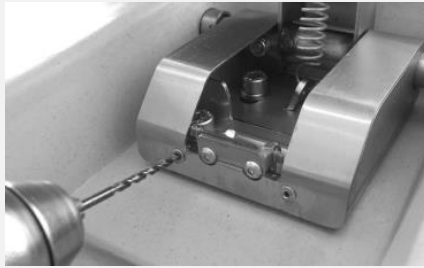


In case of excessive tread wear, we recommend replacing the four wheels.

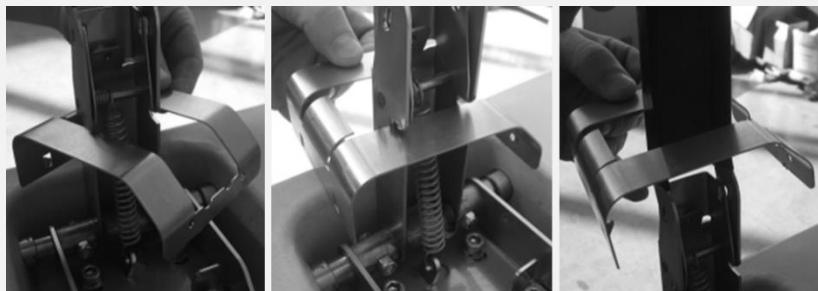
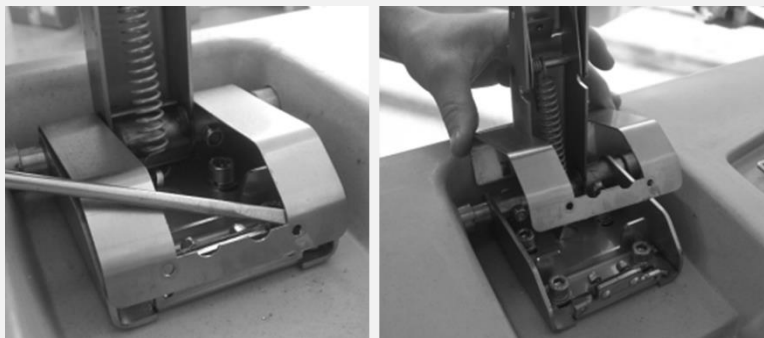
4.4.3 Replacement of the closing handle with release button

Replace the closing handle by following these steps:

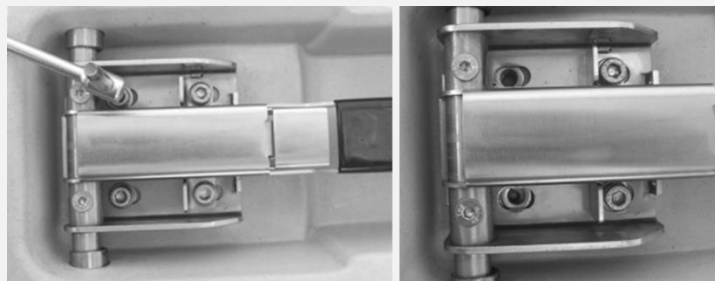
1 – Remove the rivets for steel 3.2x10 using a drill and a 2.5-3mm iron bit



2 – Remove the metal cover using a flat tool (e.g. cutting screwdriver)



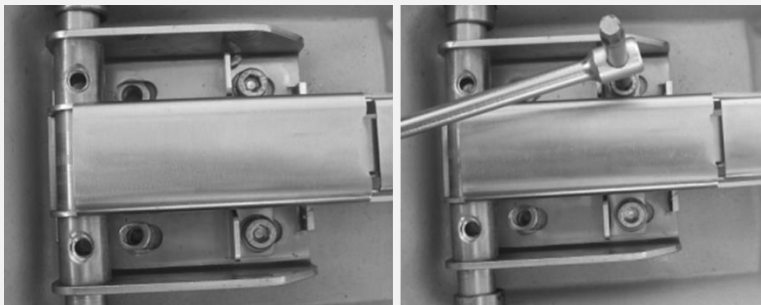
3 – Unscrew the 2 stainless steel screws cylindrical head with recessed hexagon M8x16 with the relative stainless steel washers groover (screws placed on the left, next to the rod)



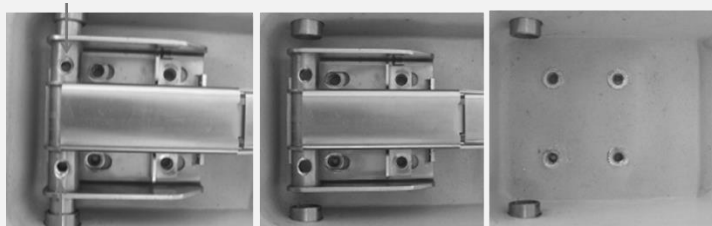
4 - Unscrew the two M6 self-locking hexagonal stainless steel nuts on the rod and remove the two stainless steel screws with flat countersunk head and recessed hexagon M6x25



5 - Unscrew the 2 stainless steel screws cylindrical head with recessed hexagon M8x16 with the relative groover stainless steel washers (last two screws located on the right)



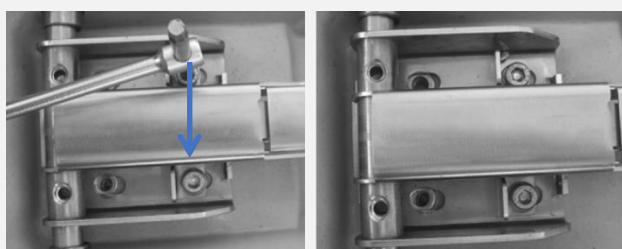
6 - Remove the two upper and lower rods of the door and remove the stainless steel closure.



7 - Once the closing handle has been removed, replace it with a new handle and fix it proceeding in the direction inverse to what is described above: place the closure in the appropriate seat and slide the rods upper and lower by inserting them inside the seat of the closure.



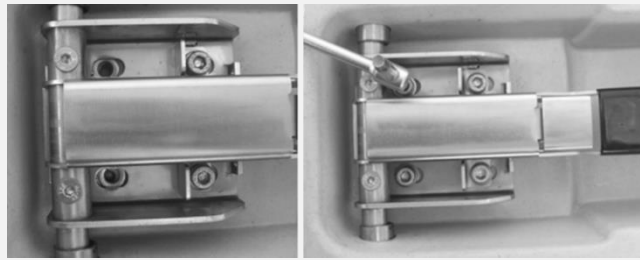
8 - Screw the 2 stainless steel screws cylindrical head with recessed hexagon M8x16 with the relative groover stainless steel washers (screws placed externally, on the right)



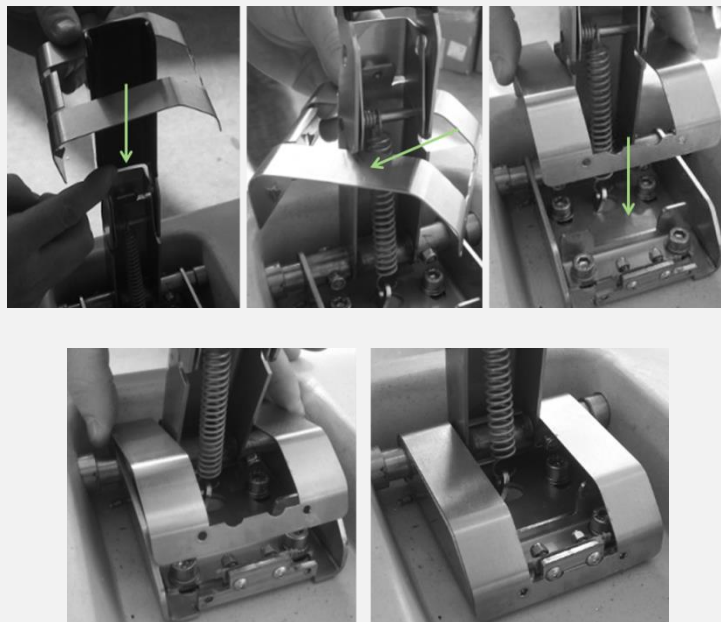
9 - Insert on the rod the two stainless steel screws with flat countersunk head and M6x25 recessed hexagon and screw the two stainless steel nuts hexagonal self-locking M6



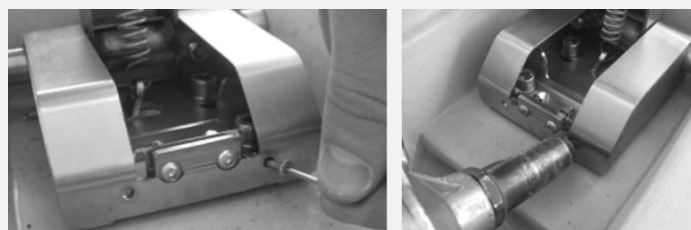
10 - Screw the 2 stainless steel screws cylindrical head with recessed hexagon M8x16 with the relative groover stainless steel washers (screws positioned on the left, next to the rod)

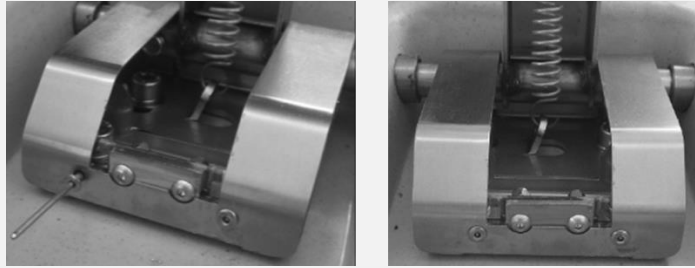


11 - Insert the metal cover



12 - Insert the rivets for steel 3.2x10 using a special riveting machine





4.4.4 Replacement of the closing lever handle

Replace the closing handle proceeding in the following manner:

- 1 - Unhook the closing handle from the handle



- 2 - Unscrew the nut and the M8 unscrewing screw with its Ø10mm washer.



- 3 - Replace the handle.

- 4 - Reassemble the nut and the unscrewing screw with the relative washer, proceeding in the opposite direction.

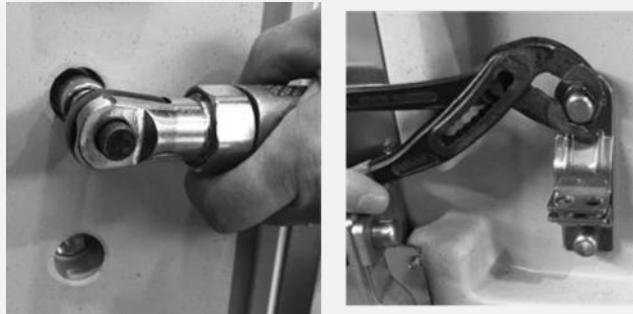
4.4.5 Replacing of the handle stop

Replace the handle strap as follows:

- 1 - Open the door.
- 2 - Using a flat tool (for example, a flat-blade screwdriver or scraper), remove the polyethylene plugs on the inside of the door;



3 - Unscrew the nuts and the unscrewing screws M8, with the relative washers;



4 - Replace the complete handle stopper;

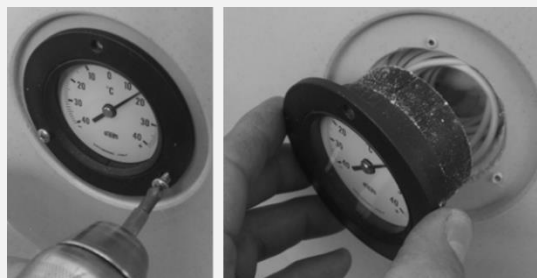
5 - Refit the nuts and anti-loosening screws with their washers, proceeding in reverse order;

6 - reposition the polyethylene caps.

4.4.6 Replacing the thermometer

Replace the thermometer by following these steps:

1 - Unscrew the 3 3.9 X 16mm self-tapping stainless steel screws with cylindrical head and cross cut and remove the thermometer from its seat. Remove the probe cable connected to it



2 - Insert a new thermometer, taking care to position the bulb of the probe at the holes on the cover probe plate and screw the three 3.9 X 16mm self-tapping stainless steel screws with head cylindrical and crosscut

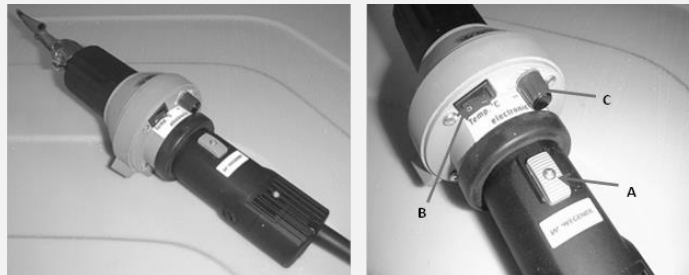
3 - If necessary, in order to position the probe correctly, remove the cover probe plate present on the inside of the door. To do this, remove the 4 aluminum rivets 4.8x16mm using a drill and a 4.5 mm bit. Once the probe bulb is correctly positioned, reposition the plate fixing it with 4 aluminum rivets 4.8x16mm.



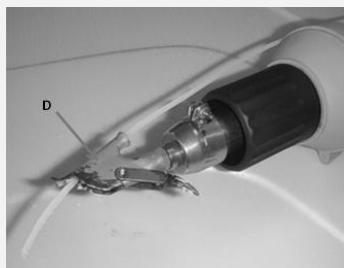
4.5 Welding instructions

To weld the polyethylene walls, we recommend the use of a WEGENER continuous wire welding machine (available on request), proceeding as follows:

- 1 - Connect the welding machine mains plug into the 230V power outlet.
- 2 - Turn on the welding machine by placing the gray switch (A) on ON.
- 3 - Operate the resistors by placing the black switch (B) on ON.
- 4 - Adjust the thermostat by placing the red knob (C) on position 5.



- 5 - Bring the parts to be welded closer together. Place the welding machine spout in the closed position in contact with the parts to be welded and joined with several junction points, using the jet of hot air.
- 6 - Turn the spout backwards and insert the polyethylene wire for welding into the appropriate seat (D).



- 7 - Place the spout near the area to be welded and let the molten polyethylene deposit. The welding machine drag speed is a function of the temperature set on the thermostat and The size of the part to be restored. Proceed until the area to be restored is completely saturated with molten polyethylene.



8 - To turn off the welding machine, place the red knob (C) of the thermostat on the value 0, deactivate the resistors by placing the black switch (B) on OFF, turn off the welding machine by placing the switch gray (A) to OFF and remove the mains plug from the 230V power outlet.

9 - Allow the layer of polyethylene deposited on the area to be welded to cool for a few minutes.

10 - Remove the excess deposited polyethylene using a special deburring knife.



5. DISPOSAL

5.1 Packaging

The packaging material (cardboard corners, polyethylene film) is 100% recyclable. Disposal is the responsibility of the user and must be carried out in compliance with local regulations.

5.2 Product

The container is made of recyclable materials, and can therefore be disposed of in an environmentally friendly way. At the end of its life cycle, the product must not be dispersed in the environment, but disposed of in accordance with local regulations.

The materials of which the container is composed are:

- 1- Polyethylene (Internal and external walls of the container and door)
- 2- Polyurethane (Insulating material between the walls of the container and the door, CFC and HCFC free)
- 3- Silicone rubber (gasket)
- 4 - Polyamide (wheel band and core)
- 5- Galvanized steel (hinge rods, metal plates for connecting the hinge rods, supports for wheels and related screws and fixing washers)
- 6- Stainless steel (handles, closing rods, closing handle and relative rivets, screws, nuts and washers, pins on hinge rod)
- 7- Aluminum (container identification plates and rivets)
- 8 - Plexiglass (card holder)

6. CERTIFICATIONS

The container has undergone rigorous certification processes that confirm its high quality and safety. The following certifications attest to the compliance of the CARGO container with the highest standards:

1. HACCP certification: CARGO containers are suitable for use in HACCP environments, ensuring the control of food risks and maximum hygienic safety.
2. ATP certification: The CARGO container complies with ATP standards for road transport of perishable foodstuffs, ensuring the correct storage of goods during transport.

These certifications confirm that the CARGO container is designed and manufactured in such a way as to guarantee the highest quality and safety in the transport and storage of perishable food products.

Thank you for choosing a MELFORM product!



Via Savigliano 34, 12030 Monasterolo di Savigliano (CN) - ITALY
Tel. +39 0172812600 – info@melform.com
www.melform.com